



Christie CineLife and CineLife+ Rental Mode

Frequently asked questions (FAQ)

For Internal Use - Version 1.0

CHRISTIE®



1. What is Rental Mode?

Rental Mode is a new capability of Christie CineLife (Series 3) and CineLife+ (Series 4) projectors which enables a new model for acquiring and using a cinema projector. Instead of purchasing a projector outright, Rental Mode allows the option for a projector to be rented or leased to an exhibitor. This allows a dealer to realize a recurring revenue stream from their clients.

Use of the projector is enabled by Rental Mode licenses that are applied to the projector and control the operation of the projector. Rental Mode license durations can be either be for a date range, or a preset number of projector light hours. Usage restrictions can also include access to the auxiliary input ports (HDMI & SDI) and, in the case of CineLife+ projector, the maximum laser brightness can also be restricted.

Rental Mode is enabled by a Commission File which, once applied to the projector, "locks down" the projector and disables projector light-on operation. A License File is then applied to the projector to enables projector functionality based on the terms of the license. Licenses enable projector operation to proceed until a preset expiry date or a preset number of light hours has passed. At that point, projector operation is suspended until another license file is applied to the projector.

2. What are the part numbers associated with Rental Mode?

Part #	Agile Description	Expanded Description
163-154101-01	RM Commission	Rental Mode Commission File enables rental mode on projectors
163-155102-01	RM License Subscription	Rental Mode License Subscription -recurring billing cycle
163-156103-01	RM License Hours	Rental Mode License Hours - standard sales order
163-157104-01	RM Restrict License SUBSCPTN	Rental Mode Restricted License Subscription - recurring billing cycle
163-158105-01	RM Restrict License Hours	Rental Mode Restricted License Hours -standard sales order
163-159106-01	RM Decommission	Rental Mode Decommission File disables rental mode on projectors

3. What is the difference between a regular license and a restricted license?

In addition to restricting usage of a projector by a date-range or number of light hours, a rental license can also add the following restrictions:

- Prevent access to the auxiliary inputs (HDMI & SDI ports)
- Restrict laser brightness to a set maximum percentage (CineLife+ only)

If you require one of these restrictions, then you will require a restricted license.

Note: the distinctions between the different types of licenses is a convenience for Customer Care. From a technical point of view, all licenses are treated the same by the projector.

CHRISTIE®



4. If I have an "Hours" license on my projector that still has hours left on it, and I install a new "Hours" license, do I lose the old hours?

The short answer is no. This is most easily explained by an example. If you have a projector with 50 hours remaining on the "Hours" license, and you install a new "Hours" license with an additional 2000 hours, then the projector will add the two together to give a new number of hours remaining in the license as 2050 hours.

5. What is required to enable Rental Mode?

To enable Rental Mode, you require two files which are purchased from Christie Customer Care: a Commission File and a License File. The Commission File is only applied once to enable Rental Mode on the projector. Once applied, you will see a lock icon appear on the right hand side of the touch panel user interface. At this point, the projector can no longer be illuminated. To regain use of the projector, you must apply a License File. A License File enables the projector to operate for a specific date range or number of light hours. Once, the date has expired, or the number of hours of the license are exceeded, then another License file must be applied to regain projector operation.

6. How do I disable Rental Mode?

To disable rental mode, you must apply a Decommission File to the projector. The Decommission File is unique to the serial number of the projector. Once applied, the Decommission File will turn the projector back into a "regular" free-and-open projector.

7. What versions of firmware are required to enable Rental Mode?

Rental Mode is available for both CineLife and CineLife+ projectors. The following are the minimum firmware versions required:

CineLife	2.5.0-10	Basic Rental Mode functionality
CineLife+	1.2.0-9	Basic Rental Mode functionality
CineLife+	1.3.0-x	Adds Brightness restriction

8. What projectors are supported?

Rental Mode supports all CineLife (Series 3) and CineLife+ (Series 4) projectors. The Brightness Restriction functionality is only available for CineLife+ projectors running v1.3.0 or later.

9. Do projector upgrades affect Rental Mode?

Rental Mode is not affected by projector upgrades. Rental Mode will continue to be active after a projector upgrade.

10. What are Rental Mode License files?

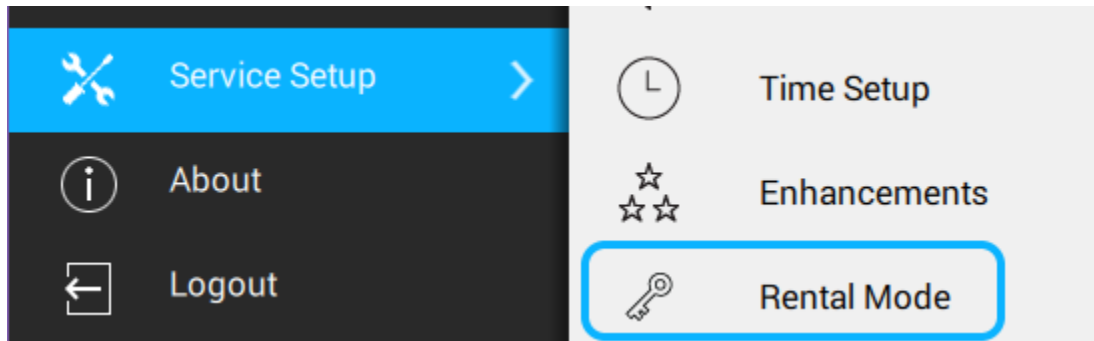
The Rental Mode Commission File and License Files are delivered as small .zip files which are then installed on the projector using the Rental Mode functions.



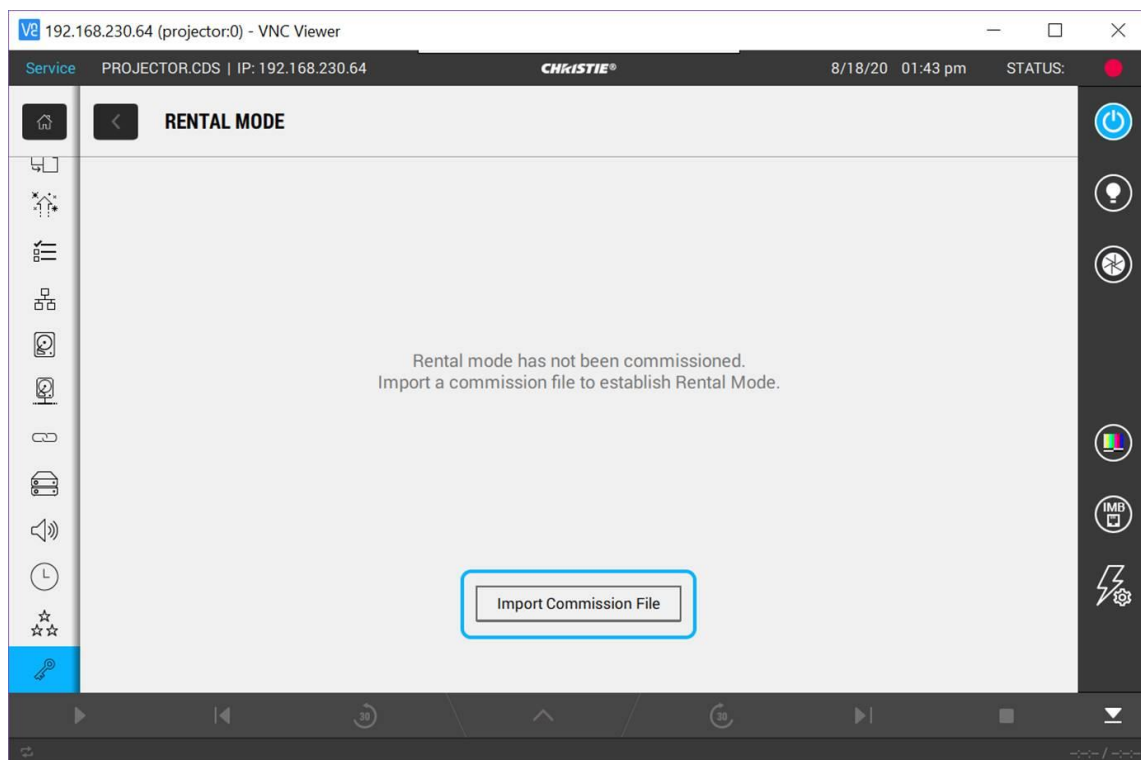
11. How is Rental Mode enabled? How is a Commission File applied to the projector?

Rental Mode is enabled by applying a Commission File to the projector. A Commission File is purchased from Christie Customer Care and is unique for each projector. After acquiring the Commission File from Christie, follow these steps to enable Rental Mode:

1. Put the Commission File on a USB flash drive and insert in the USB port on the projector faceplate
2. From the touch panel menu select Service Setup -> Rental Mode:



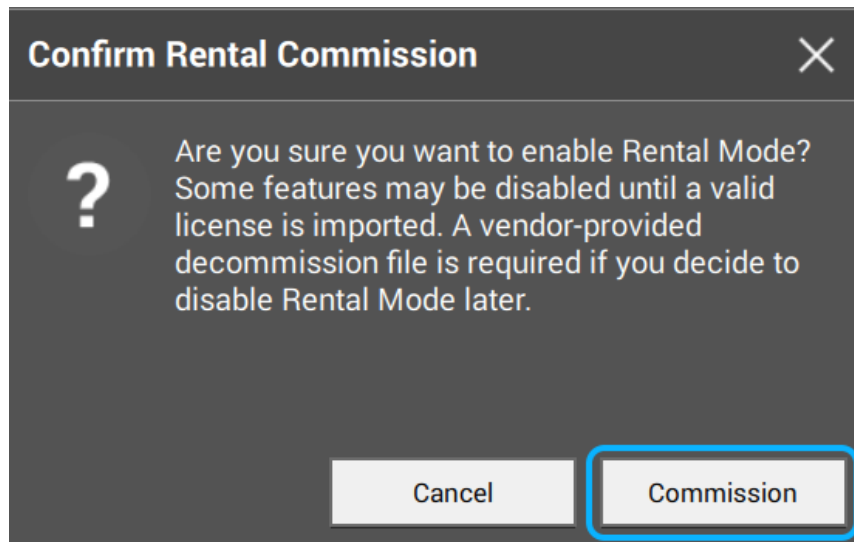
3. Press the Import Commission File button:



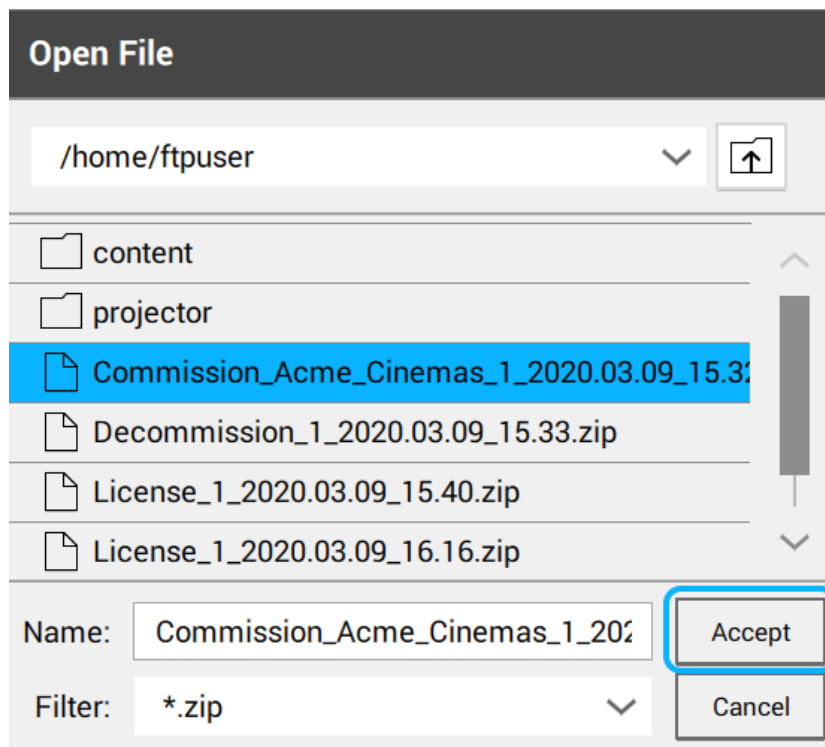
4. The Confirm Rental Commission dialog is then displayed. Press the Commission button:

CHRISTIE®



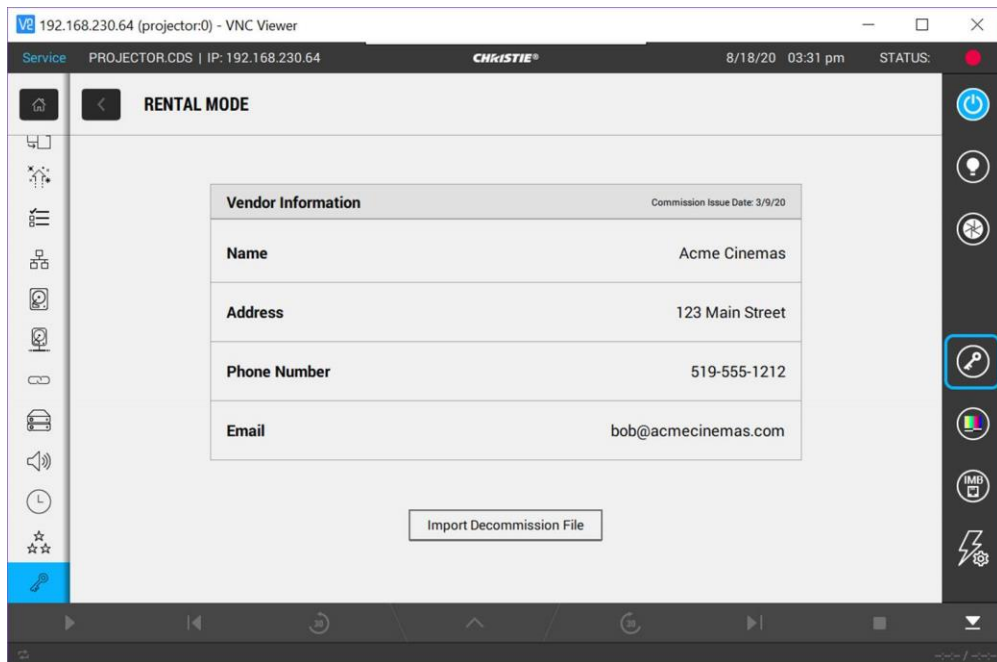


5. From the Open File dialog select the Commission File on the USB flash drive, and select Accept:



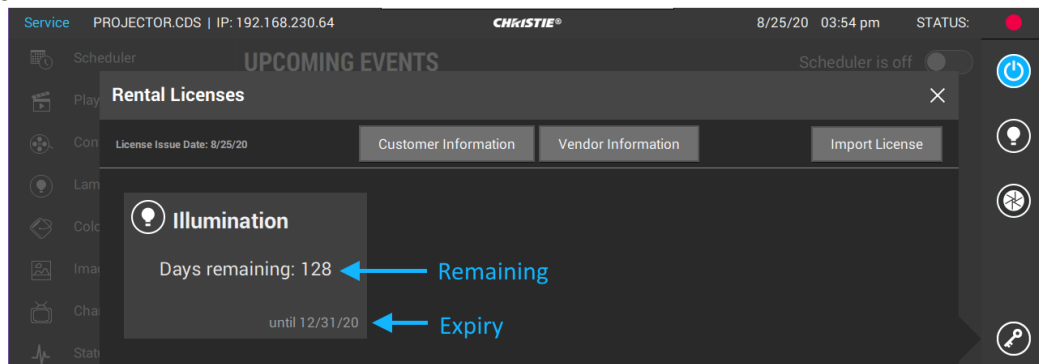
6. After the Commission File is applied, a key icon appears on the right sidebar of the touch panel user interface to indicate that the projector is now in Rental Mode:



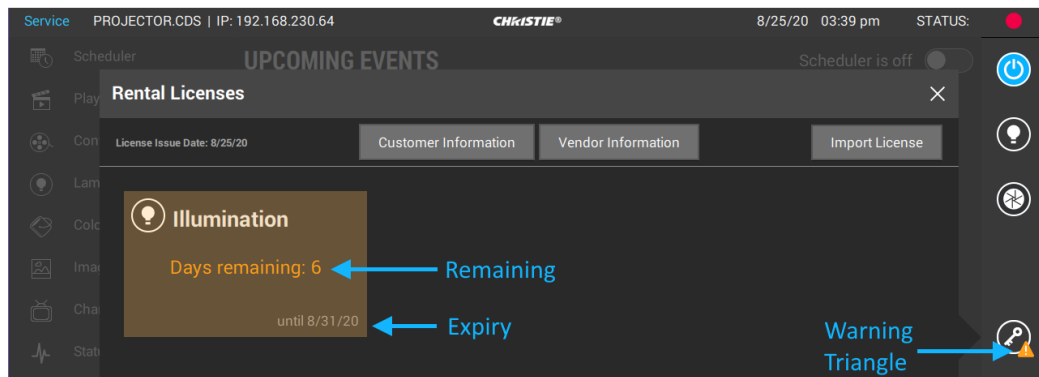


12. How can I tell when my current Rental Mode license will expire?

If you click on the key icon on the right hand sidebar of the touch panel user interface, then you will be shown the following screen that gives you the status of the current rental licenses installed on your projector:



When you get close to the expiry of the license, the color of the text in the license box changes, and a triangle warning indicator appears beside the key icon:



13. What are the warning and error thresholds when a Rental Mode license is about to expire?

Threshold	Warning
static const int HRS_WARNING_THRESHOLD	140 hours (14 days @ 10 hrs/day)
static const int HRS_ALARM_THRESHOLD	30 hours (3 days @ 10 hrs/day)
static const int DAYS_WARNING_THRESHOLD	14 days
static const int DAYS_ALARM_THRESHOLD	3 days

An exhibitor ready to rent?

This FAQ is intended to give you an overview of what Rental Mode is to help guide a dealer through the process of setting up a projector for rental use.

If there are any additional questions that are not addressed here, please contact Kevin Draper
kevin.draper@christiedigital.com.

CHRISTIE®

